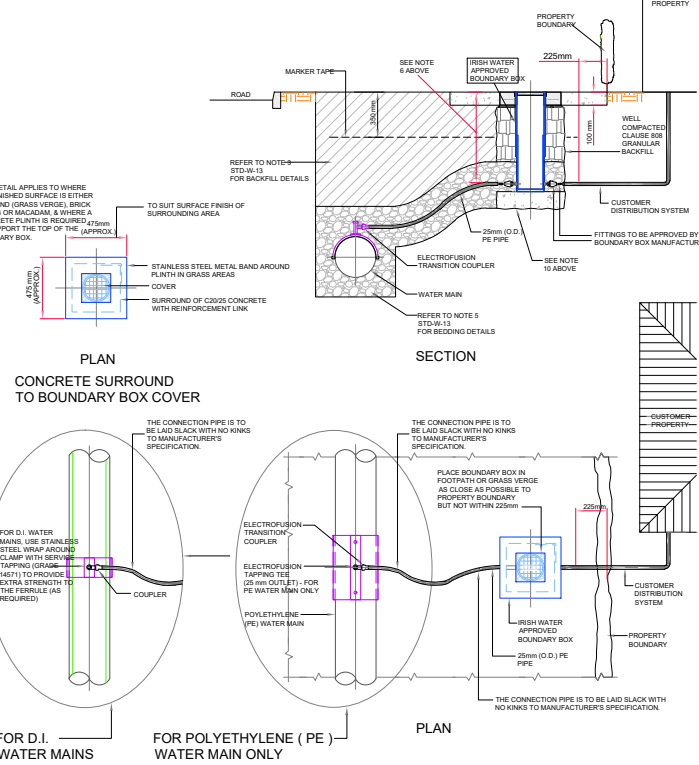
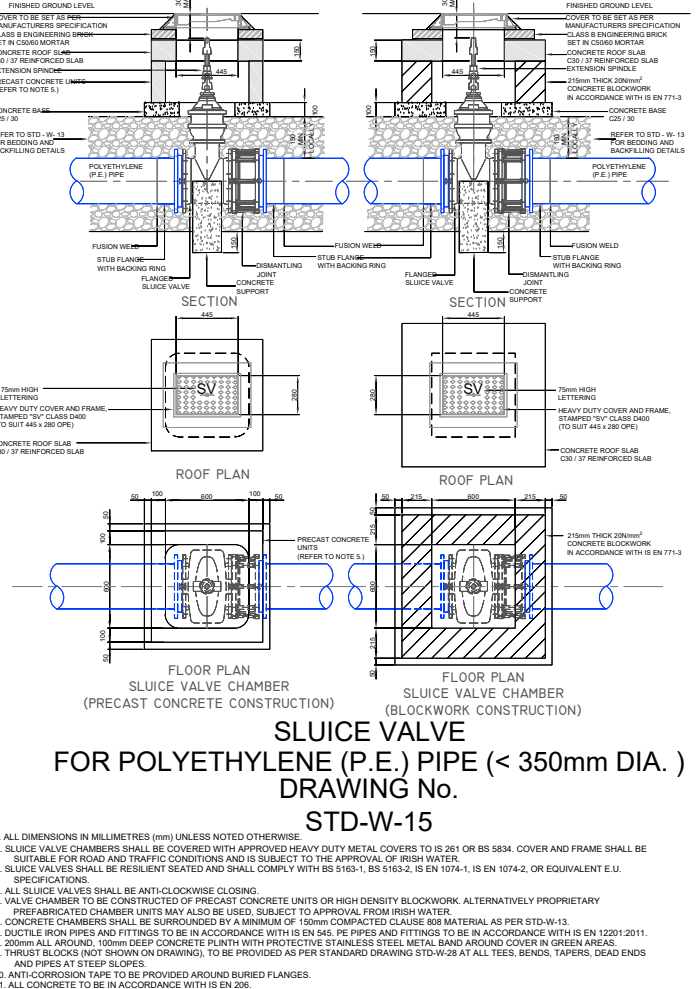


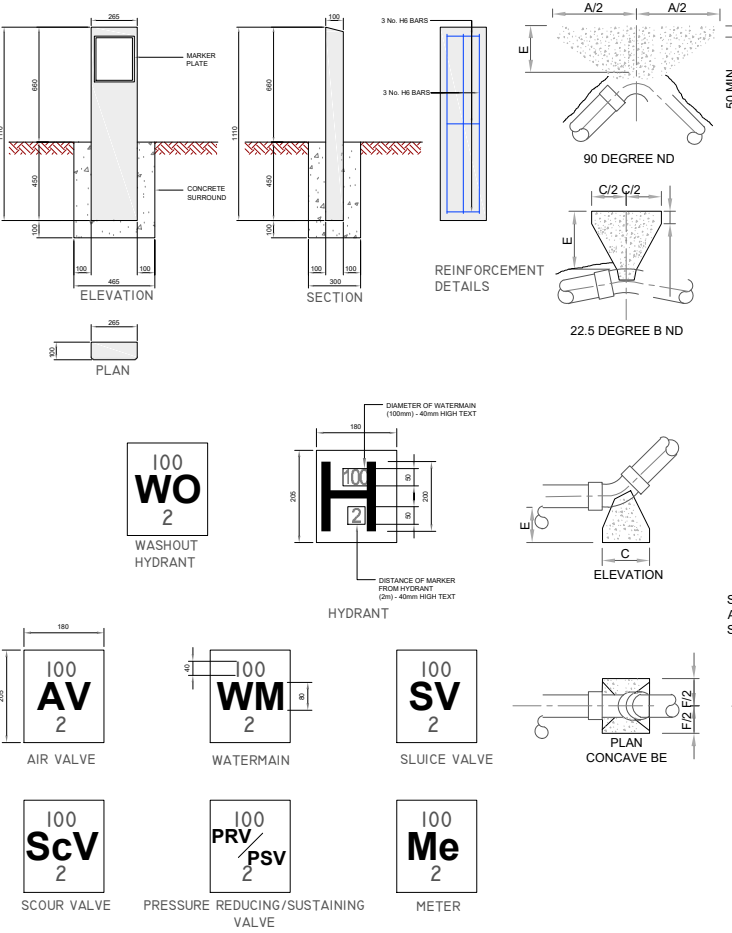
NOTE:
THIS DRAWING TO BE READ IN CONJUNCTION WITH IRISH WATER INFRASTRUCTURE STANDARD DETAILS, DOCUMENT NUMBER: IW-CDS-5020-01, AUGUST 2016. THIS INCLUDES FOR ALL RELEVANT NOTES PERTAINING TO EACH OF THE DETAILS AS INCLUDED. THIS DRAWING ALSO TO BE READ IN CONJUNCTION WITH DWG. NO. P200401_200



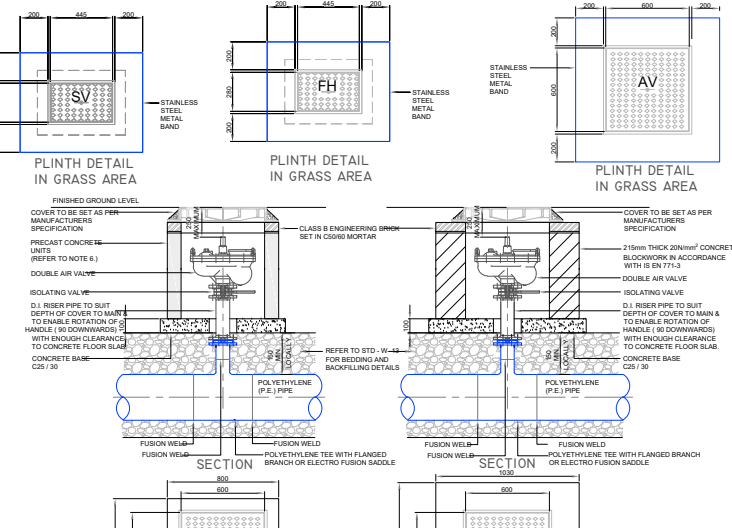
CUSTOMER CONNECTION AND BOUNDARY BOX (25mm OD PIPE)
DRAWING No. STD-W-03



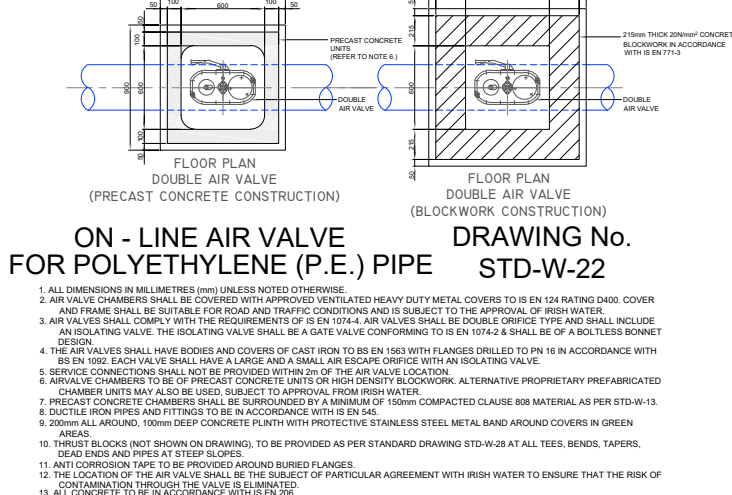
SLUICE VALVE FOR POLYETHYLENE (P.E.) PIPE (< 350mm DIA.)
DRAWING No. STD-W-15



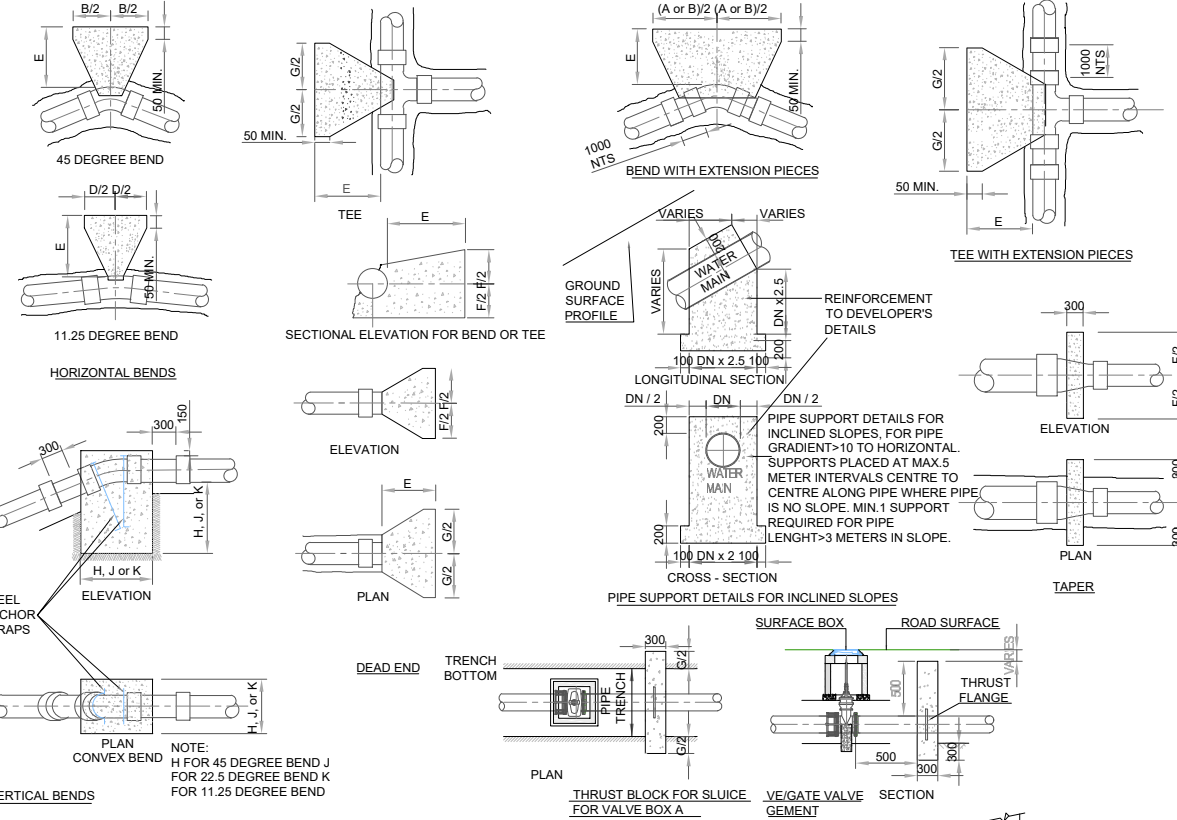
WATER MAIN THRUST AND SUPPORT BLOCKS
DRAWING No. STD-W-28



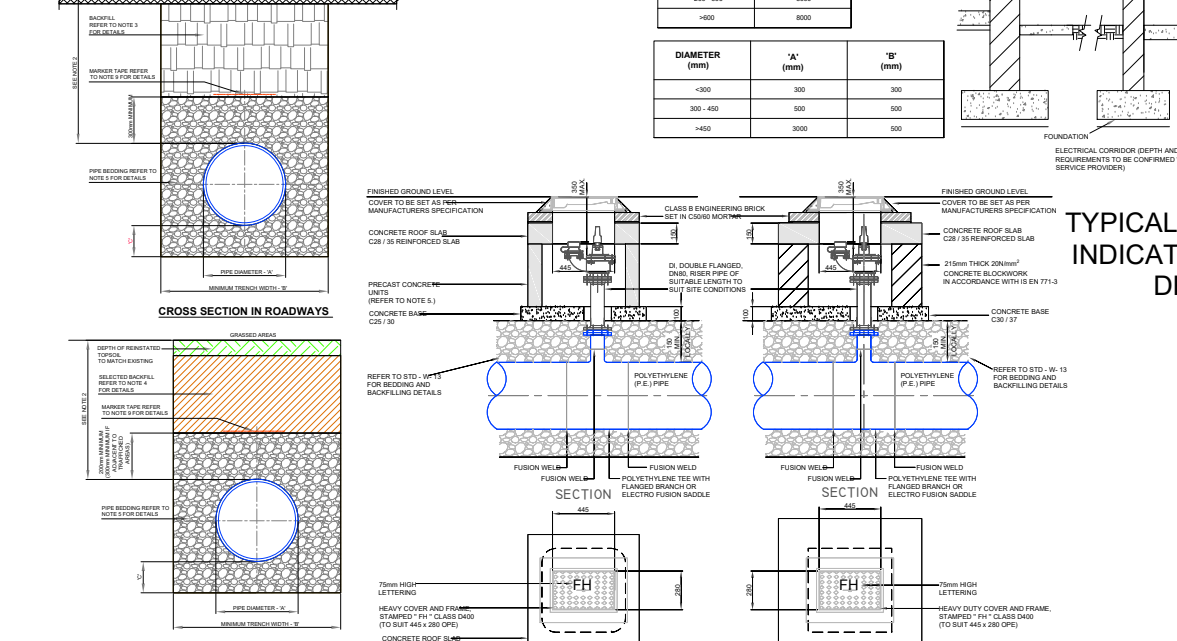
MARKER POSTS / PLATES
DRAWING No. STD-W-27



TRENCH BACKFILL AND BEDDING
DRAWING No. STD-W-13



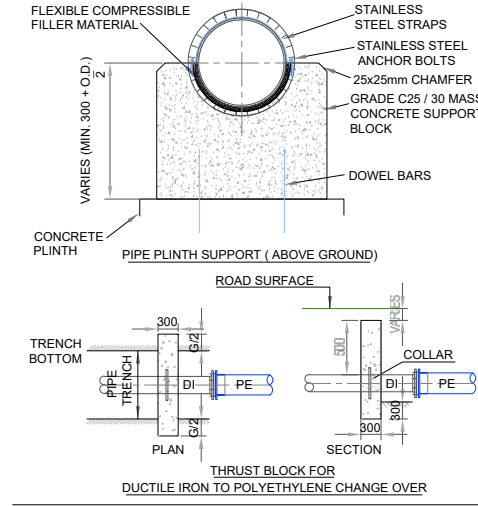
TYPICAL SERVICE LAYOUT INDICATING SEPARATION DISTANCES
DRAWING No. STD-W-11



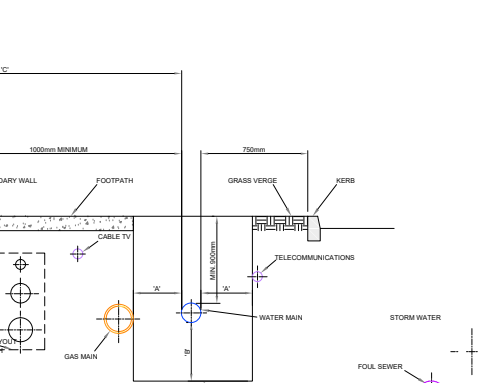
ON - LINE HYDRANT FOR POLYETHYLENE (P.E.) PIPE
DRAWING No. STD-W-18

PIPE DIAMETER 'A' (mm)	TRENCH WIDTH 'B' (mm)
≤80	SEE NOTE 10
100	500
150	600
200	600
250	750
300	750
350	750
400	900
450	900

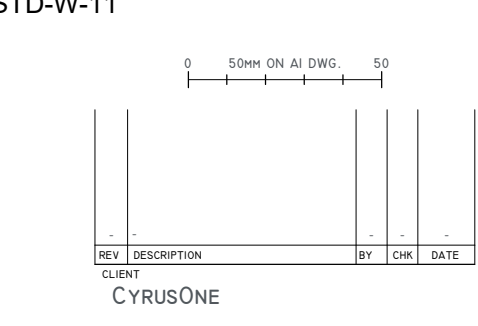
PIPE DIAMETER 'A' (mm)	DEPTH OF BEDDING 'C' (mm)
< 200	150
> 250	200



GRADIENT	SPACING
1 IN 2 & STEEPER	5.5m
BELOW 1 IN 2 TO 1 IN 4	11.0m
1 IN 4 TO 1 IN 5	16.6m
1 IN 5 TO 1 IN 6	22.0m



CROSS SECTION IN ROADWAYS AND GRASSED AREAS
DRAWING No. STD-W-13



REINFORCEMENT DETAILS
DRAWING No. STD-W-28

PINNACLE CONSULTING ENGINEERS

GROSVENOR COURT, 67A PATRICK STREET, DUN LAOGHAIRE, COUNTY DUBLIN, IRELAND. TELEPHONE: +353 1231 1041
NORWICH | WELWYN GARDEN CITY | LONDON | BRISTOL

PLANNING

SCALE	DATE	DRAWN BY	CHECKED
As Shown	Dec. '20	AB	SO'R
DWG No.	REVISION	SHEET SIZE	REV. PROC.
205	-	A1	

DRAWING STATUS: PLANNING